
Etcher Mattson @ SUPREMA

1. System Configuration
2. Module Image
3. Operation Video

1. System Configuration


◎ Mattson SUPREMA HW Configuration

CHECK ITEM		SUPREMA			
		Maker	Model	QTY	Remark
MAIN SYSTEM		Mattson	SUPREMA	1	MT3522
SYSTEM	Power		AC/DC Power Supply	1	031-52-901
	HDD(SOFTWARE)			0	HDD 탈착
	Computer		UI Computer	1	
	EPD		EPD PC	1	99F6832
EFEM	EFEM ROBOT		EFEM ROBOT	1	
	Blade 1		EFEM Robot Ceramic Blade Lower	1	
	Blade 2		EFEM Robot Ceramic Blade Upper	1	
Chamber	TGV Controller		TGV Controller	2	
	TGV Actuator		TGV Actuator	2	
	TGV Assembly		TGV Assembly	2	
	Matcher		Matcher	4	RFS-3019
	Generator		Generator	4	TR-3000 (PM2_D Power Off)
	MFC		Gas MFC	8	Z312M
etc.	Power Rack		Power Rack	1	FMS-E02
	Pump Power Rack		Pump Power Rack	1	3002299
	Dry Pump		Dry Pump	0	Removed


1. Configuration 작성 / 사진 촬영 이후 일체 변경 없음.
2. 명시된 Parts에 대해서만 검증된 정보임. (ex. Assembly 내 세부 Parts 검증 불가)

2. Module Image

품명	PR STRIPPER	
Model	SUPREMA	
Serial No.	MT3522	
취득일	2008.05.01	MR0000012412



200814100494-0



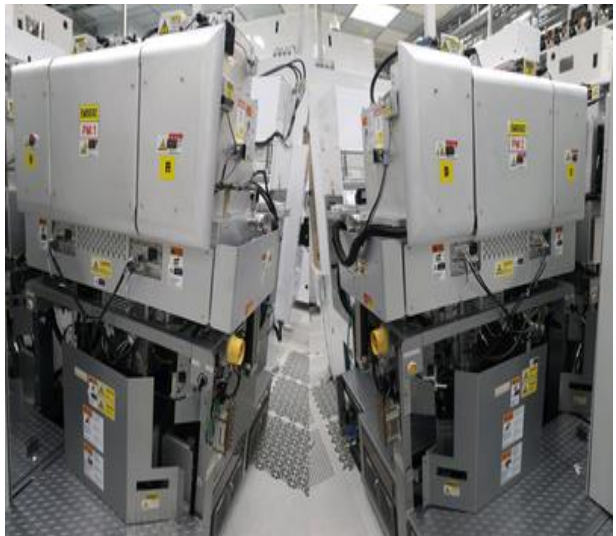
PUMP Power Rack



Power Rack



EFEM
(Equipment Front End Module)



Process Module



Transfer Module

2. Module Image

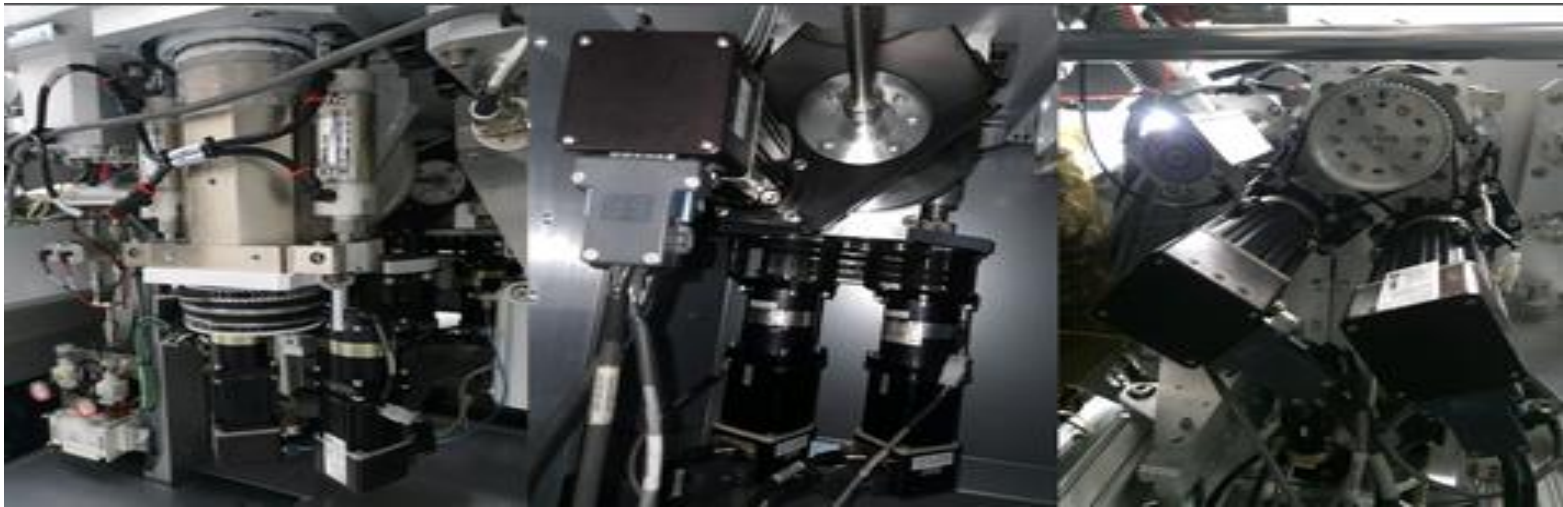
UI Monitor



UI PC

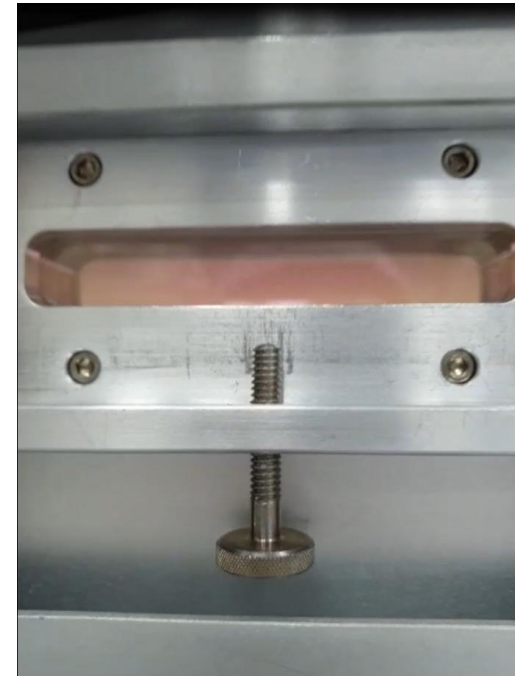
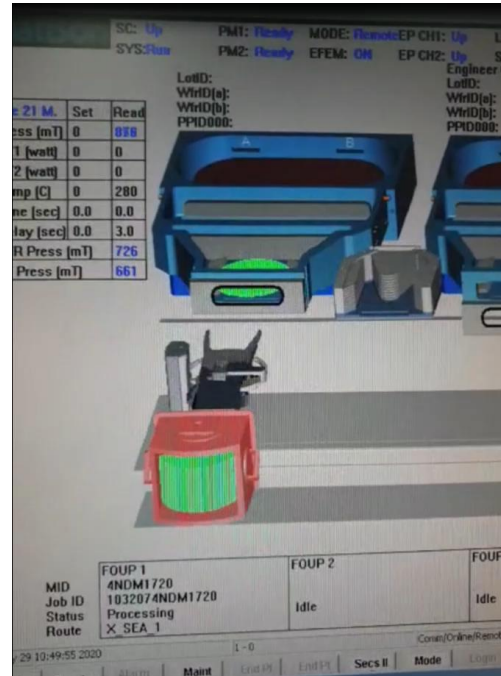


EPD PC



Robot

3. Operation Video



1. PM1 #AB Seasoning 진행 동영상임
2. PM2 #C는 Plasma On 검증 완료
3. PM2 #D는 Generator off로 Plasma 검증 불가